



Mitigation Base – Swivel and Slide function, with or without height adjustment



Article code	MWHFTBAX	MWNFTBAX
Seat mounting plate Length/Width	332/316mm*	332/316mm*
Deck mounting plate Length/Width	375/225mm	375/225mm
Height	310-360mm	335mm
Weight	14,5kg	14kg

*Note: Handles 260mm from center-line

- Heavy Duty Mitigation Base
- Infinite damping force adjustment 50-130kg
- Fore/aft adjustment 120mm in 5 different locking positions
- Swivel 360°, in 8 different locking positions (every 45°)
- Standard mounting pattern options; 5'x5', 5'x12', etc
- Meets all ABYC H-31 standards for highest type AO

Mitigation Base – Slide function, with or without height adjustment



Article code	MSHFTBAX	MSNFTBAX
Seat mounting plate Length/Width	332/316mm*	332/316mm*
Deck mounting plate Length/Width	375/225mm	375/225mm
Height	310-360mm	335mm
Weight	12,5kg	12kg

*Note: Handle 260mm from center-line

- Heavy Duty Mitigation Base
- Infinite damping force adjustment 50-130kg
- Fore/aft adjustment 120mm in 5 different locking positions
- Standard mounting pattern options; 5'x5', 5'x12', etc
- Meets all ABYC H-31 standards for highest type AO

Mitigation Base - RIB Mounting Plate, with or without height adjustment



Article code	MFHFTBAX	MFNFTBAX
Seat mounting plate Length/Width	332/190mm	332/190mm
Deck mounting plate Length/Width	375/225mm	375/225mm
Height	310-360mm	335mm
Weight	11,5kg	11kg

- Heavy Duty Mitigation Base
- Infinite damping force adjustment 50-130kg
- Standard mounting pattern options; 5'x5', 5'x12', etc
- Meets all ABYC H-31 standards for highest type AO
- Suitable for jockey seats



Low/Sport Mitigation Base – Swivel and Slide function, with or without height adjustment



Article code	MWHFLBAX	MWNFLBAX
Seat mounting plate Length/Width	332/316mm*	332/316mm*
Deck mounting plate Length/Width	375/225mm	375/225mm
Height	250-310mm	275mm
Weight	14,5kg	14kg

*Note: Handles 260mm from center-line

- Heavy Duty Mitigation Base
- Infinite damping force adjustment 50-130kg
- Fore/aft adjustment 120mm in 5 different locking positions
- Swivel 360°, in 8 different locking positions (every 45°)
- Standard mounting pattern options; 5'x5', 5'x12', etc
- Meets all ABYC H-31 standards for highest type AO

Low/Sport Mitigation Base – Slide function, with or without height adjustment



Article code	MSHFLBAX	MSNFLBAX
Seat mounting plate Length/Width	332/316mm*	332/316mm*
Deck mounting plate Length/Width	375/225mm	375/225mm
Height	250-310mm	275mm
Weight	12,5kg	12kg

*Note: Handle 260mm from center-line

- Heavy Duty Mitigation Base
- Infinite damping force adjustment 50-130kg
- Fore/aft adjustment 120mm in 5 different locking positions
- Standard mounting pattern options; 5'x5', 5'x12', etc
- Meets all ABYC H-31 standards for highest type AO

Low/Sport Mitigation Base - RIB Mounting Plate, with or without height adjustment

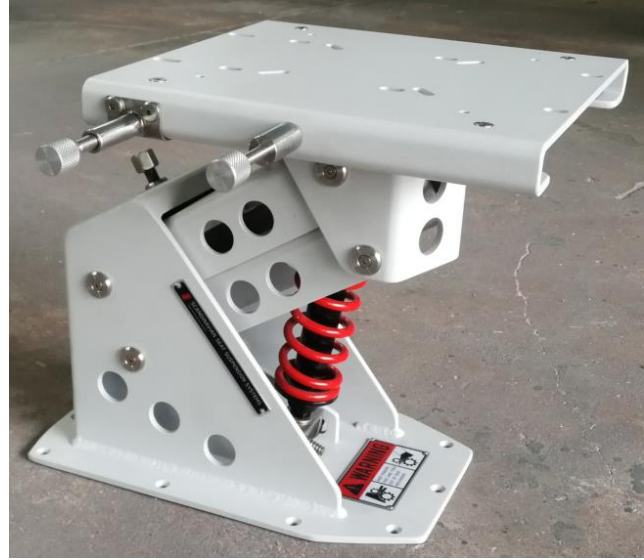


Article code	MFHFLBAX	MFNFLBAX
Seat mounting plate Length/Width	332/190mm	332/190mm
Deck mounting plate Length/Width	375/225mm	375/225mm
Height	250-310mm	275mm
Weight	11,5kg	11kg

- Heavy Duty Mitigation Base
- Infinite damping force adjustment 50-130kg
- Standard mounting pattern options; 5'x5', 5'x12', etc
- Meets all ABYC H-31 standards for highest type AO
- Suitable for jockey seats

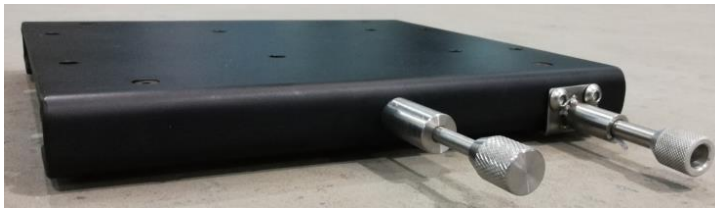


Color Options – Silver or White



BLACK is standard coating color. SILVER or WHITE is option on all products. Available on orders exceeding equivalent to 50pcs of Mitigation Base units.

Low Profile Mounting Plate



- Low profile Mounting plate - 42mm
- Heavy Duty Swivel/Slide
- Fore/aft adjustment 120mm in 5 different locking positions
- Swivel 360°, in 8 different locking positions (every 45°)
- Suitable for console mounted seats
- Mounting hole pattern towards console = 130x130mm
- Mounting hole pattern Seat = standard 5'x5', 5'x12', etc

Article code	FWXFTBAX
Length	332mm
Width	316mm*
Height	42mm
Weight	4,5kg

*Note: Handles 260mm from center-line

Deck Inserts



Article code	IXXXTXSX
For screw size	M6
Length	12mm
Hex key size	H6
Pre-drill	10mm
Number in set	11pcs

- Stainless steel deck inserts, for installations where a good grip of screws in the deck cannot be guaranteed
- Suitable for GRP decks with a minimum thickness of 4mm
- Inserted by hex-key after hole is drilled



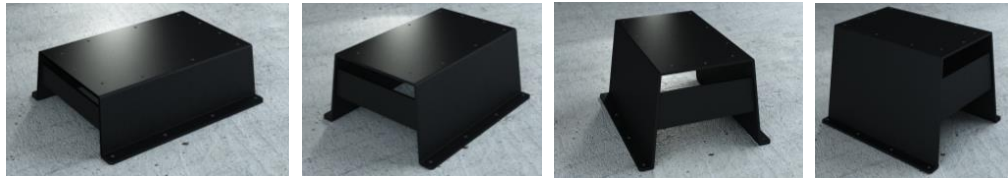
Pedestal GRP. 100 / 150 / 200 / 250



Article code	PXXXLBGX	PXXXMBGX	PXXXHBGX	PXXXBBGX
Height	100mm	150mm	200mm	250mm
Length	480mm	485mm	495mm	505mm
Width	325mm	335mm	345mm	355m
Weight	2,5kg	3kg	3,5kg	4kg

- GRP pedestal, to achieve higher fixed seating position
- To be mounted between the deck and mitigation base bottom plate
- Suitable for jockey seats or boats where a high seating is required
- 150, 200 and 250mm Pedestals can be used as storage compartments through a water-proof hatch

Pedestal ALU. 100 / 150 / 200 / 250



Article code	PXXXLBAX	PXXXMBAX	PXXXHBAX	PXXXBBAX
Height	100mm	150mm	200mm	250mm
Length	400mm	400mm	400mm	400mm
Width	325mm	335mm	345mm	355m
Weight	3kg	4kg	5kg	6kg

- Aluminium pedestal, to achieve higher fixed seating position
- To be mounted between the deck and mitigation base bottom plate
- Suitable for jockey seats or boats where a high seating is required

Foot Pegs for Pedestals

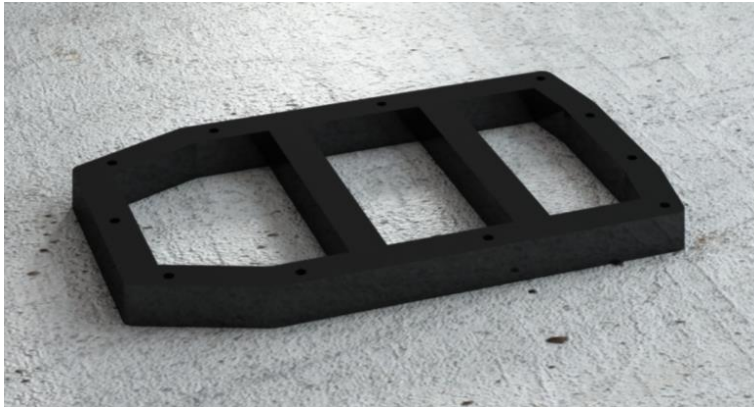


Article code	OXXXTXSX
Length per foot peg	90mm
Width per foot peg	35mm
Height	30mm
Number per set	1 pair (as per picture)

- Stainless steel foot pegs; when Mitigation Base is mounted on Pedestal (ALU/GRP), for constant foot support in resting seat position
- Automatically folds back and out of the way when not in use
- To be mounted on the front outer Mitigation Base bottom plate screws
- Mounting fasteners needed are included in the product package



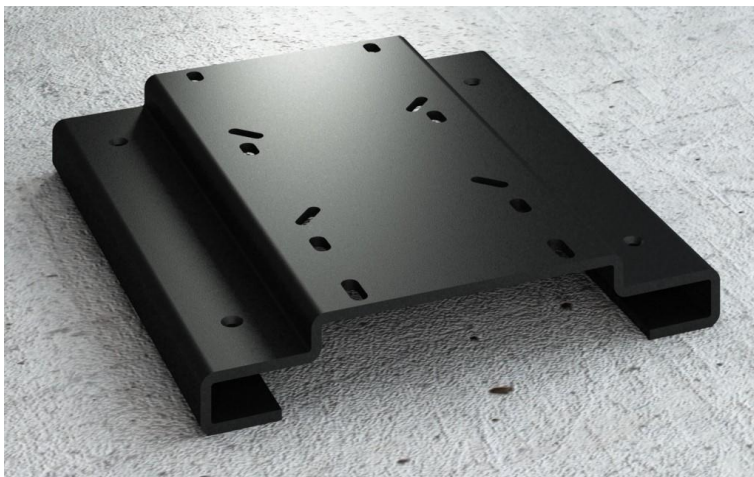
Raiser 25



Article code	RXXXMBPX
Length	375mm
Width	225mm
Height	25mm
Weight	0,5kg

- Plastic raiser, to achieve 25mm higher fixed seating position
- To be mounted between the deck and mitigation base bottom plate
- Maximum 3 raiser on top of each other = 75mm height

Mounting Plate - Recess



Article code	AXXBTBAX
Length	332mm
Width	316mm*
Height	+20mm
Weight	+0.5kg

*Note: Handles will be 260mm from center-line

- Option to Standard Mounting plate
- Mounting plate for seats that have mounting area sitting in recess
- Mounting area is 332x190mm (L/W) and 20mm high
- Mounting hole pattern; standard 5'x5', 5'x12', etc

Cover Plate. Small / Big



Article code	CXXXSBAX	CXXXBBAX
Width	265mm	310mm
Length	435mm	475mm
Height	4mm	4mm
Weight	1,5kg	2kg

- Powder coated 4mm aluminium cover plate
- To be mounted between the deck and mitigation base bottom plate
- To cover exposed holes from previously mounted tripods
- Previous holes should still be leak-proofed before mounting