



Mitigation Base – Swivel and Slide function, with or without height adjustment



Article code	MWHFTBAX	MWNFTBAX
Seat mounting plate Length/Width	13"/12,5"*	13"/12,5"*
Deck mounting plate Length/Width	14,5"/9"	14,5"/9"
Height	12"-14"	13"
Weight	32lb	31lb

*Note: Handles 10" from center-line

- Heavy Duty Mitigation Base
- Infinite damping force adjustment 110-285lb
- Fore/aft adjustment 5" in 5 different locking positions
- Swivel 360°, in 8 different locking positions (every 45°)
- Standard mounting pattern options; 5'x5', 5'x12', etc
- Meets all ABYC H-31 standards for highest type AO

Mitigation Base – Slide function, with or without height adjustment



Article code	MSHFTBAX	MSNFTBAX
Seat mounting plate Length/Width	13"/12,5"*	13"/12,5"*
Deck mounting plate Length/Width	14,5"/9"	14,5"/9"
Height	12"-14"	13"
Weight	28lb	27lb

*Note: Handle 10" from center-line

- Heavy Duty Mitigation Base
- Infinite damping force adjustment 110-285lb
- Fore/aft adjustment 5" in 5 different locking positions
- Standard mounting pattern options; 5'x5', 5'x12', etc
- Meets all ABYC H-31 standards for highest type AO

Mitigation Base - RIB Mounting Plate, with or without height adjustment



Article code	MFHFTBAX	MFNFTBAX
Seat mounting plate Length/Width	13"/7,5"*	13"/7,5"*
Deck mounting plate Length/Width	14,5"/9"	14,5"/9"
Height	12"-14"	13"
Weight	25lb	24lb

- Heavy Duty Mitigation Base
- Infinite damping force adjustment 110-285lb
- Standard mounting pattern options; 5'x5', 5'x12', etc
- Meets all ABYC H-31 standards for highest type AO
- Suitable for jockey seats



Low/Sport Mitigation Base – Swivel and Slide function, with or without height adjustment



Article code	MWHFLBAX	MWNFLBAX
Seat mounting plate Length/Width	13"/12,5"*	13"/12,5"*
Deck mounting plate Length/Width	14,5"/9"	14,5"/9"
Height	10"-12"	11"
Weight	31lb	30lb

*Note: Handles 10" from center-line

- Heavy Duty Mitigation Base
- Infinite damping force adjustment 110-285lb
- Fore/aft adjustment 5" in 5 different locking positions
- Swivel 360°, in 8 different locking positions (every 45°)
- Standard mounting pattern options; 5'x5', 5'x12', etc
- Meets all ABYC H-31 standards for highest type AO

Low/Sport Mitigation Base – Slide function, with or without height adjustment



Article code	MSHFLBAX	MSNFLBAX
Seat mounting plate Length/Width	13"/12,5"*	13"/12,5"*
Deck mounting plate Length/Width	14,5"/9"	14,5"/9"
Height	10"-12"	11"
Weight	27lb	26lb

*Note: Handle 10" from center-line

- Heavy Duty Mitigation Base
- Infinite damping force adjustment 110-285lb
- Fore/aft adjustment 5" in 5 different locking positions
- Standard mounting pattern options; 5'x5', 5'x12', etc
- Meets all ABYC H-31 standards for highest type AO

Low/Sport Mitigation Base - RIB Mounting Plate, with or without height adjustment



Article code	MFHFLBAX	MFNFLBAX
Seat mounting plate Length/Width	13"/7,5"*	13"/7,5"*
Deck mounting plate Length/Width	14,5"/9"	14,5"/9"
Height	10"-12"	11"
Weight	24lb	23lb

- Heavy Duty Mitigation Base
- Infinite damping force adjustment 110-285lb
- Standard mounting pattern options; 5'x5', 5'x12', etc
- Meets all ABYC H-31 standards for highest type AO
- Suitable for jockey seats

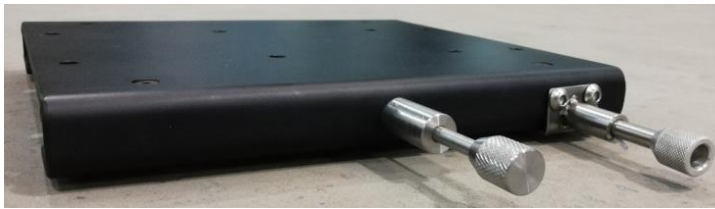


Color Options – Silver or White



BLACK is standard coating color. SILVER or WHITE is option on all products. Available on orders exceeding equivalent to 50pcs of Mitigation Base units.

Low Profile Mounting Plate



Article code	FWXFTBAX
Length	13"
Width	12,5"*
Height	1"5/8
Weight	10lb

*Note: Handles 10" from center-line

- Low profile Mounting plate – 1"5/8
- Heavy Duty Swivel/Slide
- Fore/aft adjustment 5" in 5 different locking positions
- Swivel 360°, in 8 different locking positions (every 45°)
- Suitable for console mounted seats
- Mounting hole pattern towards console = 5"x5"
- Mounting hole pattern Seat = standard 5'x5', 5'x12', etc

Deck Inserts



Article code	IXXXTXSX
For screw size	M6
Length	1/2"
Hex key size	H6
Pre-drill	3/8"
Number in set	11pcs

- Stainless steel deck inserts, for installations where a good grip of screws in the deck cannot be guaranteed
- Suitable for GRP decks with a minimum thickness of 5/32"
- Inserted by hex-key after hole is drilled



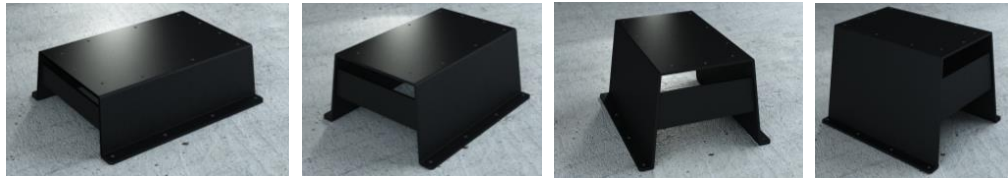
Pedestal GRP. 100 / 150 / 200 / 250



Article code	PXXXLBGX	PXXXMBGX	PXXXHBGX	PXXXBBGX
Height	4"	6"	8"	10"
Length	18,5"	19"	19,5"	20"
Width	12,5"	13"	13,5"	14"
Weight	5,5lb	6,5lb	7,5lb	8,5lb

- GRP pedestal, to achieve higher fixed seating position
- To be mounted between the deck and mitigation base bottom plate
- Suitable for jockey seats or boats where a high seating is required
- 6", 8" and 10" Pedestals can be used as storage compartments through a water-proof hatch

Pedestal ALU. 100 / 150 / 200 / 250



Article code	PXXXLBAX	PXXXMBAX	PXXXHBAX	PXXXBBAX
Height	4"	6"	8"	10"
Length	15.5"	15.5"	15.5"	15.5"
Width	13"	13,5"	14"	14"
Weight	7lb	9lb	11lb	13lb

- Aluminium pedestal, to achieve higher fixed seating position
- To be mounted between the deck and mitigation base bottom plate
- Suitable for jockey seats or boats where a high seating is required

Foot Pegs for Pedestals

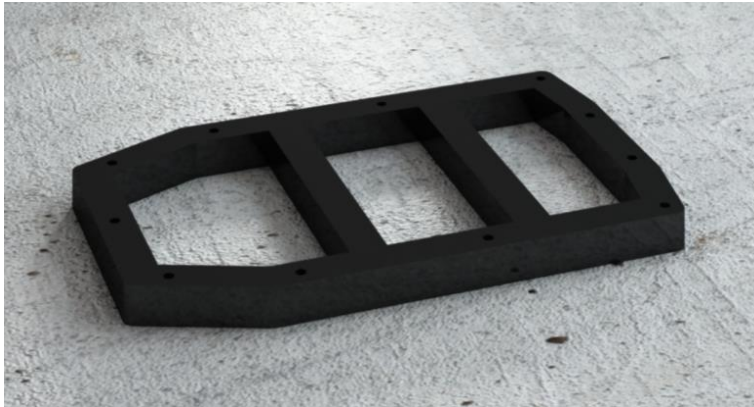


Article code	OXXXTXSX
Length per foot peg	3,5"
Width per foot peg	1,5"
Height	1"
Number per set	1 pair (as per picture)

- Stainless steel foot pegs; when Mitigation Base is mounted on Pedestal (ALU/GRP), for constant foot support in resting seat position
- Automatically folds back and out of the way when not in use
- To be mounted on the front outer Mitigation Base bottom plate screws
- Mounting fasteners needed are included in the product package



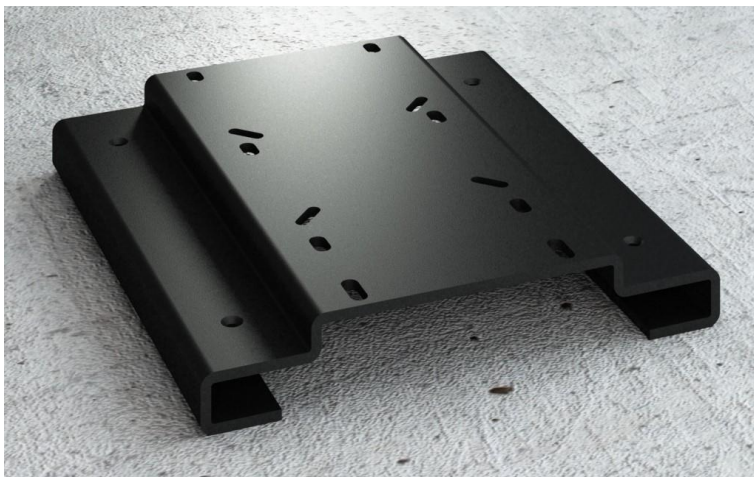
Raiser 25



Article code	RXXXMBPX
Length	14,5"
Width	9"
Height	1"
Weight	1lb

- Plastic raiser, to achieve 1" higher fixed seating position
- To be mounted between the deck and mitigation base bottom plate
- Maximum 3 raiser on top of each other = 3" height

Mounting Plate - Recess



Article code	AXXBTBAX
Length	13"
Width	12,5"*
Height	+25/32
Weight	+1lb

*Note: Handles will be 10" from center-line

- Option to Standard Mounting plate
- Mounting plate for seats that have mounting area sitting in recess
- Mounting area is 13"/7" (L/W) and 25/32" high
- Mounting hole pattern; standard 5'x5', 5'x12', etc

Cover Plate. Small / Big



Article code	CXXXSBAX	CXXXBBAX
Width	10,5"	12"
Length	17"	19"
Height	5/32"	5/32"
Weight	3lb	4,5lb

- Powder coated 5/32" aluminium cover plate
- To be mounted between the deck and mitigation base bottom plate
- To cover exposed holes from previously mounted tripods
- Previous holes should still be leak-proofed before mounting